

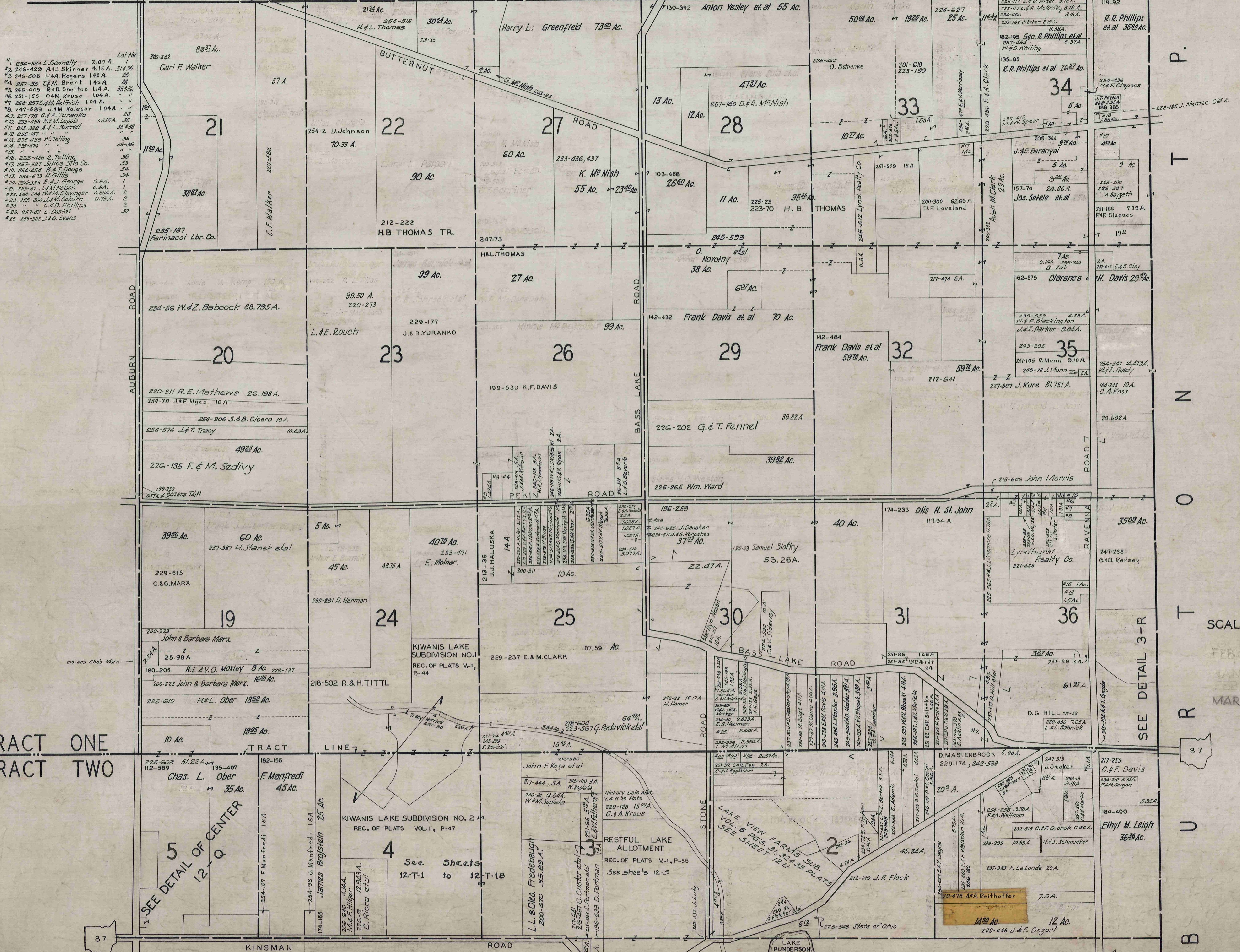
NORTH-EAST QUARTER

NEWBURY T.P.

NORTH-EAST QUARTER

44

CLARIDON TP.



- Lot No
- #1. 254-583 L. Donnelly 2.07 A.
 - #2. 246-429 A.H. Skinner 4.15 A. 314.35
 - #3. 246-508 H.A. Rogers 1.42 A. 26
 - #4. 257-55 F.N. Brent 1.42 A. 26
 - #5. 246-409 E.D. Shelton 1.14 A. 354.36
 - #6. 251-155 O.E. Kruse 1.04 A. "
 - #7. 254-297 C.F. Helfrich 1.04 A. "
 - #8. 247-589 J.M. Kolesar 1.04 A. "
 - #9. 257-176 C.F. A. Vuranko 25
 - #10. 255-456 E.H. Lepple 1.346 A. 35
 - #11. 243-328 A.F.L. Burrell 354.36
 - #12. 255-137 " " " "
 - #13. 255-486 V. Telling 36
 - #14. 255-474 " " " "
 - #15. " " " " " "
 - #16. 255-486 E. Telling 36
 - #17. 257-527 Sillda Sill Co. 33
 - #18. 254-454 B.F.T. George 34
 - #19. 255-573 H. Gillis 34
 - #20. 254-338 E.F. J. George 0.5 A.
 - #21. 253-47 J.M. Nelson 0.5 A.
 - #22. 254-244 W.M. Clevinger 0.894 A.
 - #23. 255-200 J.M. Gaskin 0.78 A.
 - #24. " " L.D. Phillips 2
 - #25. 257-83 L. Dastal 2
 - #26. 255-322 J.E.G. Evans 30

TRACT ONE
TRACT TWO

5
SEE DETAIL OF CENTER
12-Q

See Sheets
12-T-1 to 12-T-18

SCALE 1IN=10CH.

MAR. 1, 1954

SEE DETAIL 3-R

87

87

44

12 N.E.

NORTH-WEST QUARTER

NEWBURY T.P.

NORTH-WEST QUARTER

CHESTER TP.

M

U

N

S

O

N

T

O

W

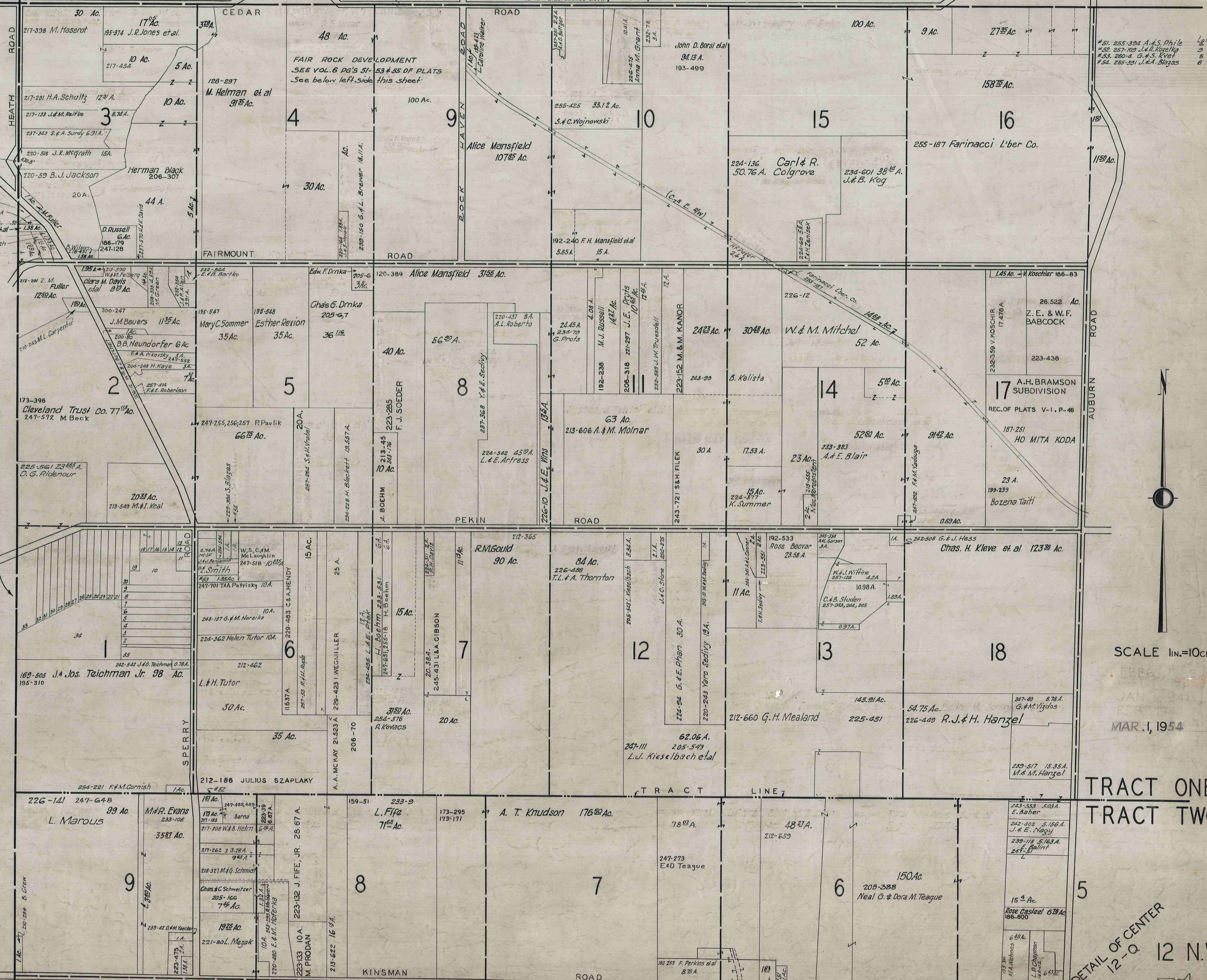
N

S

H

I

P



- 242-30 A. Trimen to 4
- 1. 243-263 M. Maredyk
- 2. " 264 "
- 3. 243-271 V. Sprinkle
- 4. 242-482 J. & M. Wolf
- 5. 243-483
- 6. 243-257 D. & A. Williams
- 7. " 255 "
- 8. 245-528 R. & A. Kravovic
- 9. 251-253 D. A. Kelso
- 10. 242-64 F. Felberg
- 11. 242-56 E. Fairchild
- 12. 243-291 R. & E. Ness
- 13. " 292 "
- 14. 242-63 E. & M. Campbell
- 15. 246-368 W. T. Blase
- 243-464 16. 242-236 A. Montgomery
- 17. 254-247
- 18. 242-363 T. & R. Murray
- 19. 242-262 H. Decapite
- 20. 243-281 E. Skinner
- 21. 242-57 J. & F. DiMatteo
- 22. 242-49 M. & A. Francis
- 23. 242-48
- 24. 242-437 C. & N. Markus
- 25. " "
- 26. 242-74 R. D. Gibbons
- 27. 246-113 M. B. Bartsch
- 28. " 114 "
- 29. " 115 "
- 30. 242-469 M. Bartsch
- 31. 242-465
- 32. 242-465
- 33. 242-466
- 34. 242-65 K. & N. Markus
- 35. 242-66

- FAIR ROCK DEVELOPMENT
- # 27. W. & E. Davies 257-246
 - # 28. M. & B. Davies 257-247
 - # 43. W. & S. Broadbent 257-370
 - # 42. E. & B. Bopp 257-369
 - # 15 & 16. H. & A. Cekada 255-507

87

87

SCALE 1 in. = 10 CH.

MAR. 1, 1954

TRACT ONE TRACT TWO

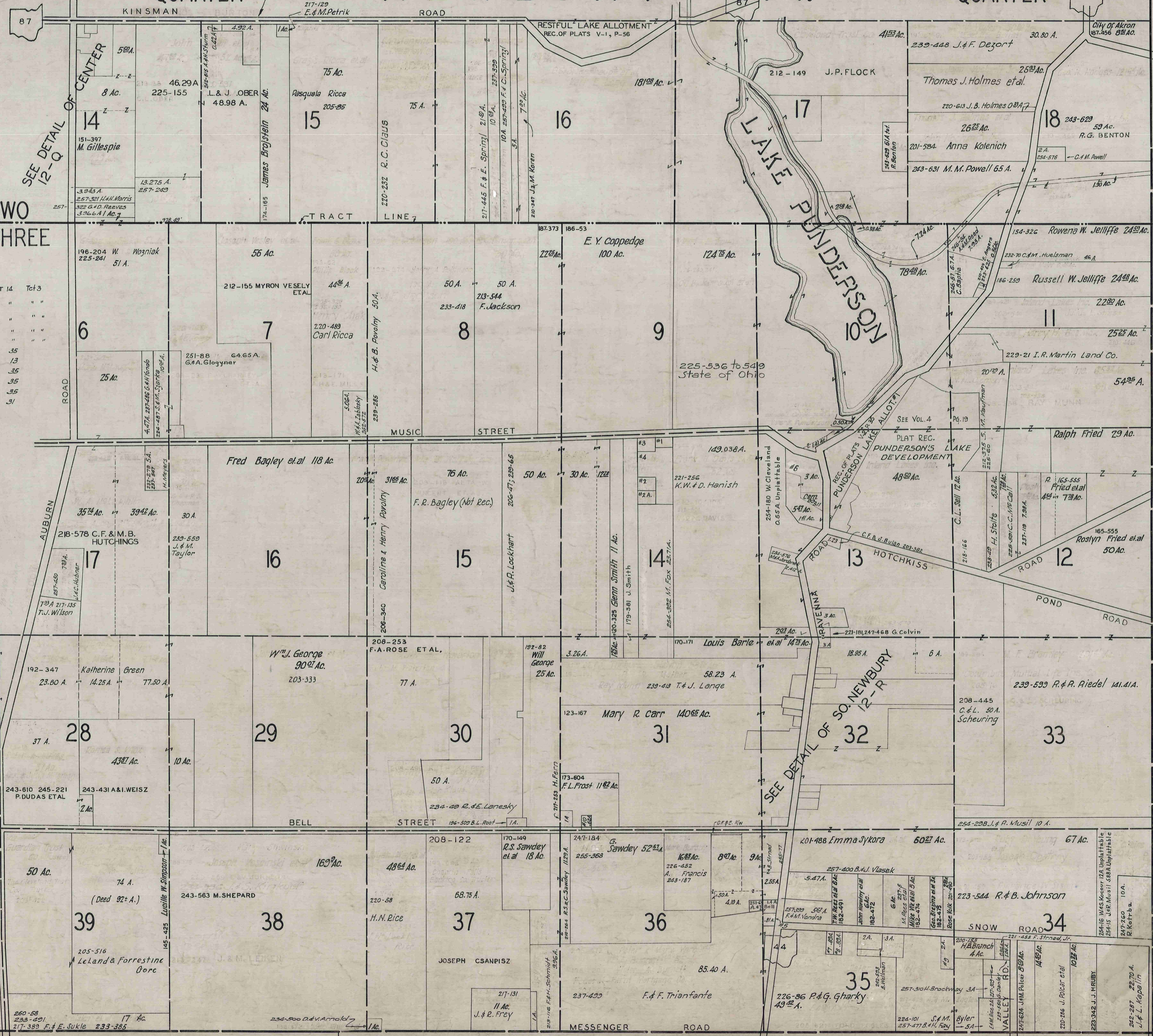
DETAIL OF CENTER 12-N.W.

SEE

SOUTH-EAST QUARTER

NEWBURY T.P.

SOUTH-EAST QUARTER



TRACT TWO
TRACT THREE

- *1 246-555 B.M. Pentoni I.A. Lot 14 Tr 3
- *2 254-63 A.R. Fisher I.A. " " "
- *2A 243-693 A. Edic I.A. " " "
- *3 254-228 H.L. Kinser 1.25 Ac. " " "
- *4 245-288 F. Kidd 6.79 Ac. " " "
- *5 225-333 M. Cabalek " 35
- *6 255-435 F. Bickelhaupf " 13
- *7 257-406 D. & E. Morton " 35
- *8 257-184 D. & J. Keyes " 35
- *9 257-526 M. Miner " 35
- *10 255-219 H. D. Frost " 31

P.
T
O
R
U
B

SCALE 1 IN. = 10 CH.

MAR. 1, 1954

12 S.E.

Newbury Twp (Qrts) 660 scale

